



# merilas

## α 532



## Green laser photocoagulator

for all retinal photo-  
coagulator procedures

your laser specialist



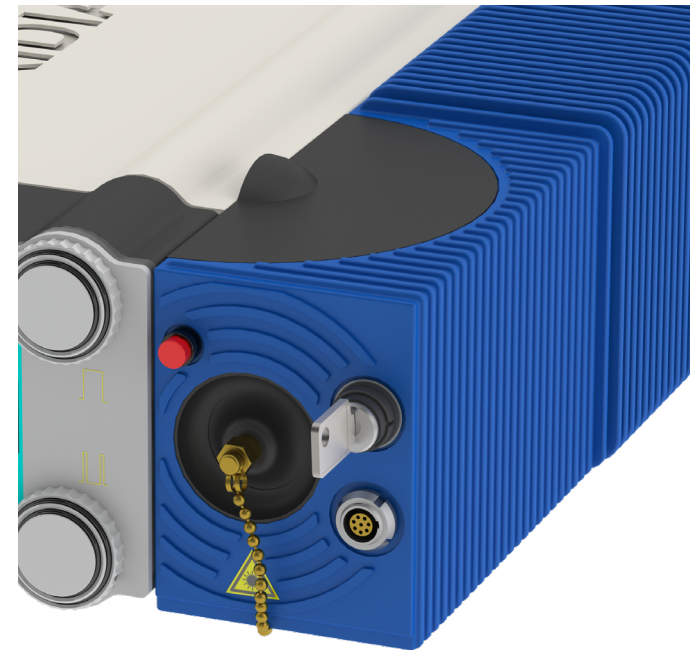


**merilas**  
α532

## SUPERIOR QUALITY & LONGEVITY

The Merilas 532 alpha is cooled by a unique thermal electrical cooling system. No ventilation slots are required. This ensures that no dust can penetrate into the interior of the laser.

The housing of the laser head is made of a high grade aluminium giving the unique solid feeling of Meridian products while moving the laser and protects the sensitive parts of the laser.



# merilas

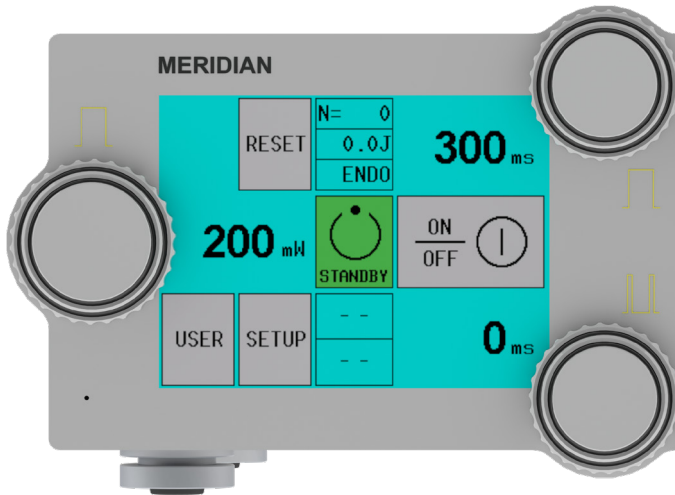
α532

## USABILITY

The Merilas lasers convince by their fast start-up.

The detachable touch display with glass technology ensures flexibility and cleanliness at the workplace. The user interface is easy to use thanks to its intuitive design. Due to our special and unique thermal-electrical cooling system there are no disturbing noises or air turbulences.

All Merilas lasers impress with their small and compact size, they can easily be transported. Each laser comes with a robust and practical transport case.



# merilas

α532

## SAFETY

Auto Key connector: The automatic recognition of the laser delivery device must be confirmed by the user.

- Stable laser output
- Parfocal laser (this assures no heating on the cornea)

Our technicians can support you via remote service in case you need assistance. This function allows fast and safe troubleshooting.





**merilas**  
α532

## FLEXIBILITY & COMFORT

Our range of slit lamp delivery systems have been designed to be compatible with a wide range of slit lamp types, either Haag-Streit or Zeiss. The Merilas lasers can be used with laser indirect ophthalmoscope and endoprobes.

Our technicians can support you via remote service in case you need assistance. This function allows fast and professional troubleshooting.



# merilas

α532

## CLINICAL INDICATION



### Photocoagulation:

Retinal photocoagulation, panretinal photocoagulation (PR) and intravitreal endo-photocoagulation of vascular and structural abnormalities of the retina and choroids, including:

- Proliferative and non-proliferative diabetic retinopathy
- Choroidal neovascularization
- Branch retinal vein occlusion
- Age-related macular degeneration
- Retinal tears and detachments
- Retinopathy of prematurity
- Macular edema
- Lattice degeneration
- Central retinal vein occlusion

### Iridotomy:

- Iridotomy in angle closure glaucoma

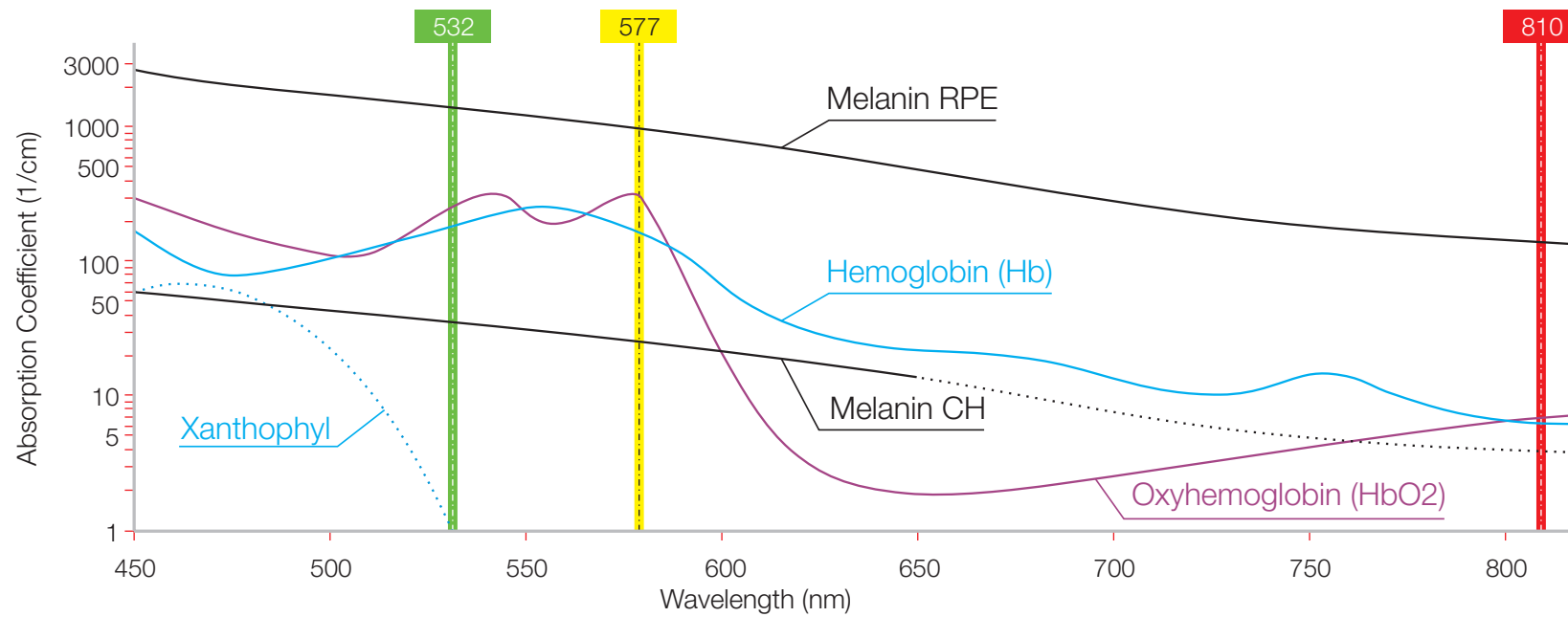
### Trabeculoplasty:

- Trabeculoplasty in open angle glaucoma



## WAVELENGTH BENEFITS – WHY 532 nm?

- The green light is best absorbed by the pigment melanin and is therefore suitable for various retinal treatments, especially of the pigmented retinal epithelium (RPE)



**merilas**  
α532

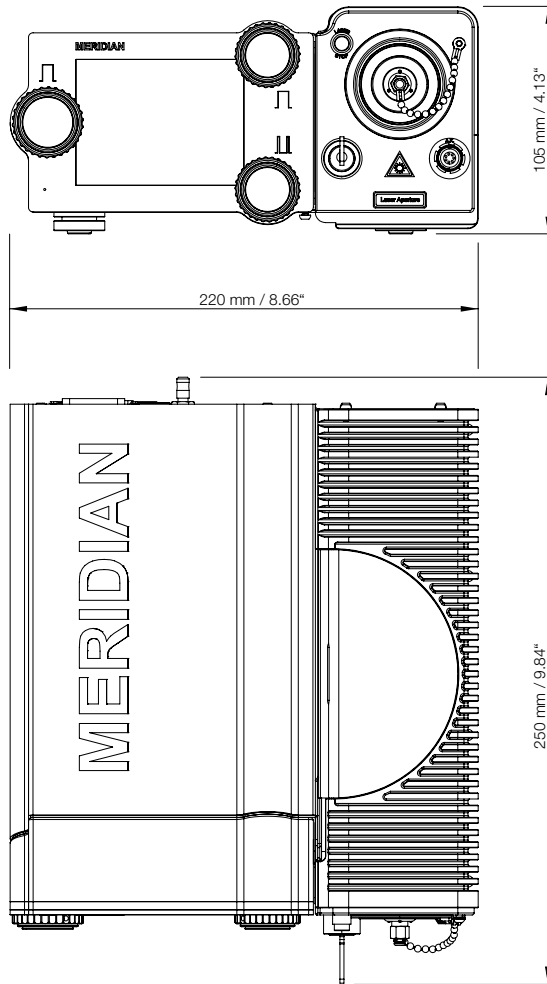
## STANDARD ACCESSORIES

- Foot switch
- Transport case

## OPTIONAL ACCESSORIES

- Slit lamp adapters
- Laser indirect ophthalmoscope
- Safety filters (passive & active)
- Endoprobes
- Safety goggles
- External fan



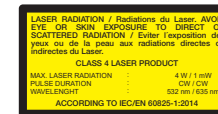


**merilas**  
α532

## TECHNICAL SPECIFICATIONS\*

Device description	Merilas 532 alpha   <b>merilas</b> α532
Safety Classifications	Class 4
Wavelength	532 nm
Power Output	50 – 2000 mW
Pulse Duration	10 ms – 5 000 ms
Pulse Interval	10 ms – 5 000 ms
Cooling	TEC
Aiming Beam	Diode 635 nm, (0-1 mW in 9 Steps)
Dimensions	25.0 x 22.0 x 10.5 cm
Total Weight	7.0 kg
Power Requirements	100 – 240 V, 50/60 Hz, 2 A max.

\* All technical specifications are subject to change without notice. In accordance with the international general safety standards: IEC 60601-1:2005/AMD1:2012., IEC 60601-1-2:2014, MDD 93/42/EEC. The laser safety is in accordance with the international standards: IEC 60825-1:2014 and IEC 60601-2-22:2007/AMD1:2012.



C/ Dante Alighieri, 121 2<sup>o</sup> 2<sup>a</sup>  
08032, Barcelona

comercial@iffservice.com

[www.iffservice.com](http://www.iffservice.com)

+34 930 116 062